
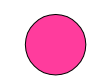
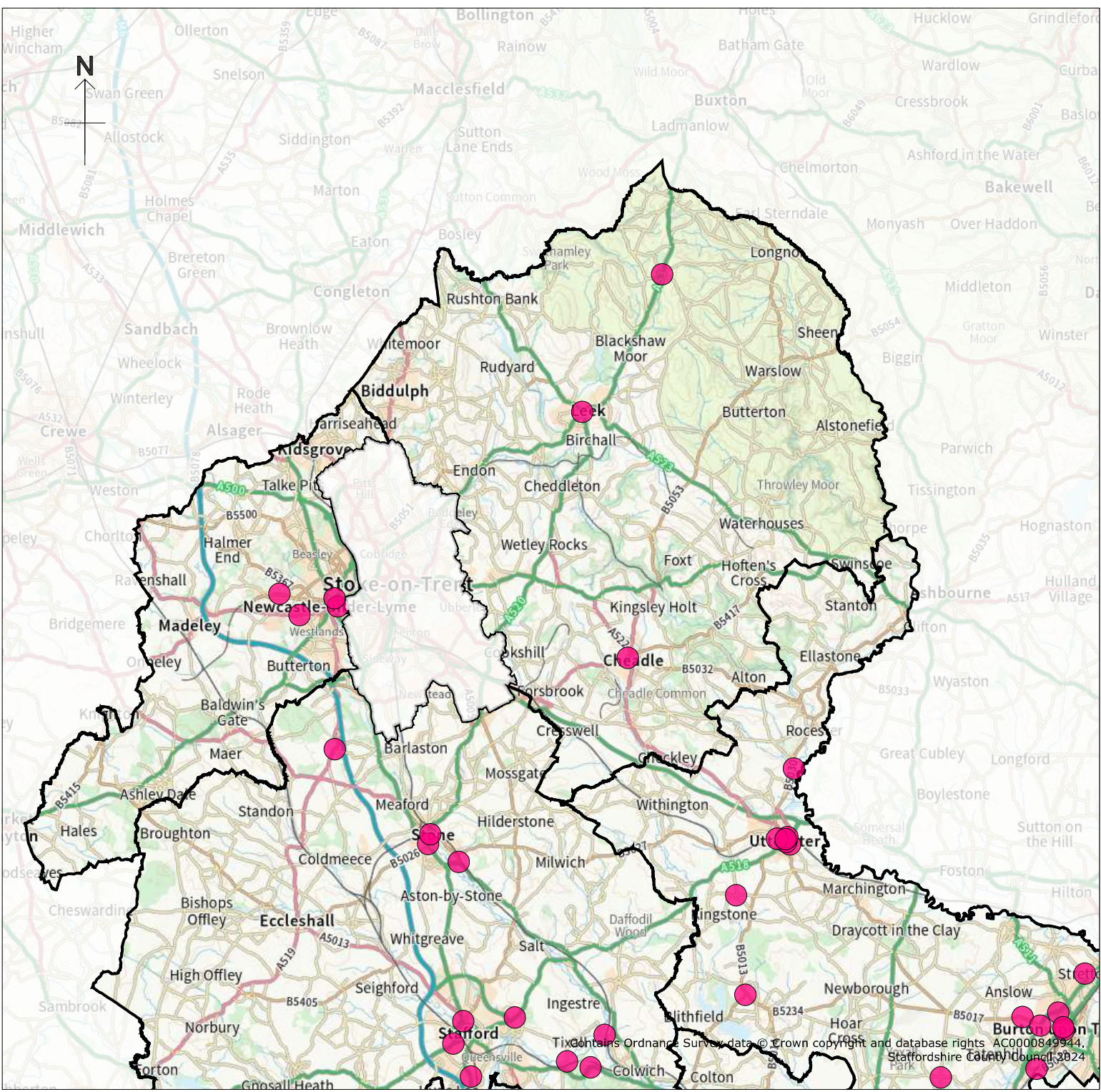


Proposed Integrated Transport Improvements 24/25


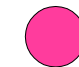
-  District boundary
-  Scheme location



Scale: 1:290000

© Crown Copyright and database rights 2024. Ordnance Survey AC0000849944.
 You are not permitted to copy, sub-license, distribute or sell any form of
 this data to third parties in any form. Use of this data is subject to the terms
 and conditions shown at www.staffordshire.gov.uk/maps
 Staffordshire County Council, 01/02/2024.
 Aerial photography copyright Airbus 2024.

Proposed Integrated Transport Improvements 24/25

-  District boundary
-  Scheme location

Scale: 1:290000

© Crown Copyright and database rights 2024. Ordnance Survey AC0000849944
 You are not permitted to copy, sub-license, distribute or sell any form of
 this data to third parties in any form. Use of this data is subject to the terms
 and conditions shown at www.staffordshire.gov.uk/maps
 Staffordshire County Council, 01/02/2024.
 Aerial photography copyright Airbus 2024.

